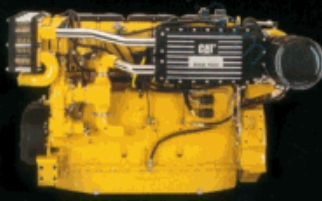
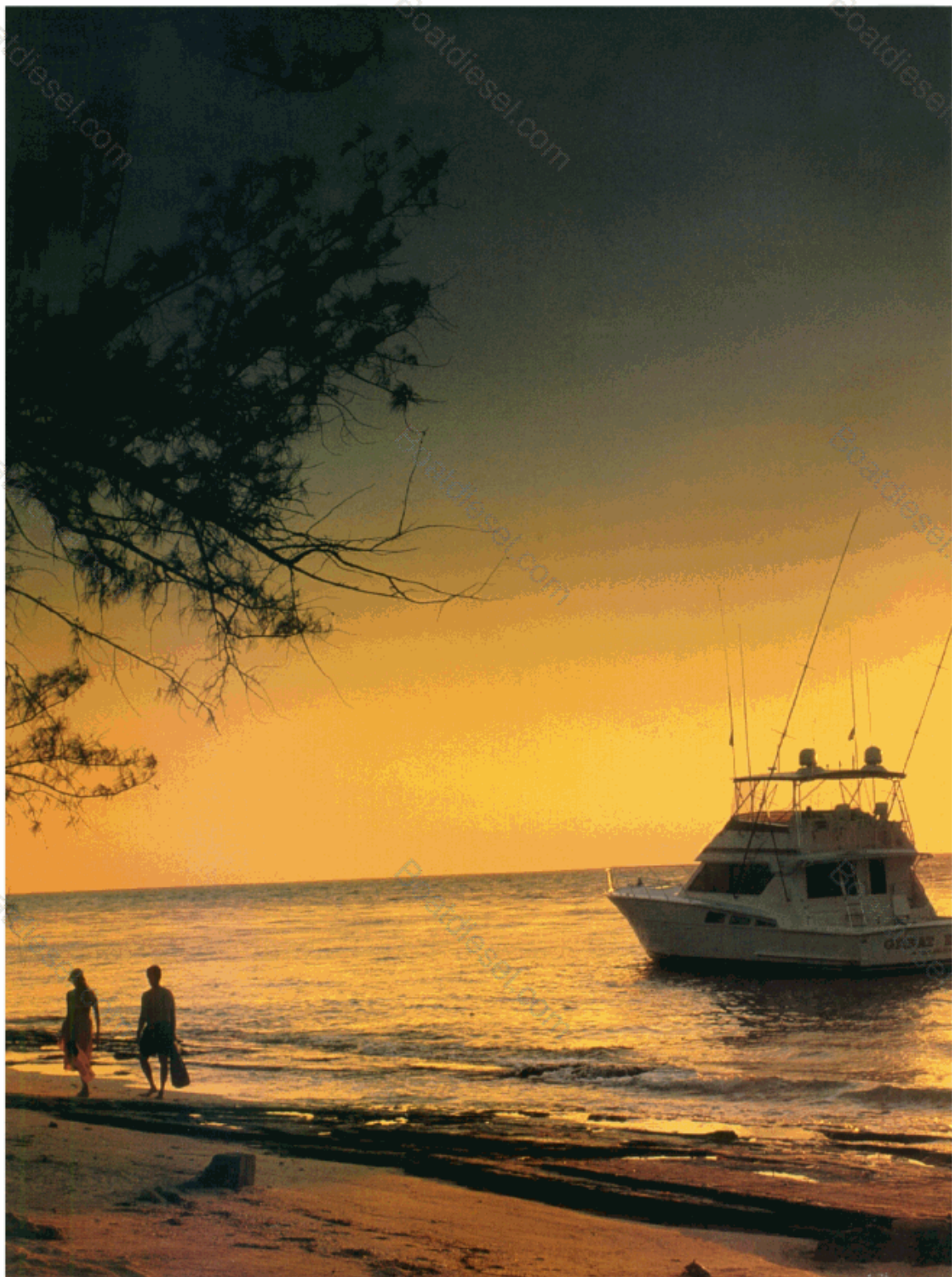
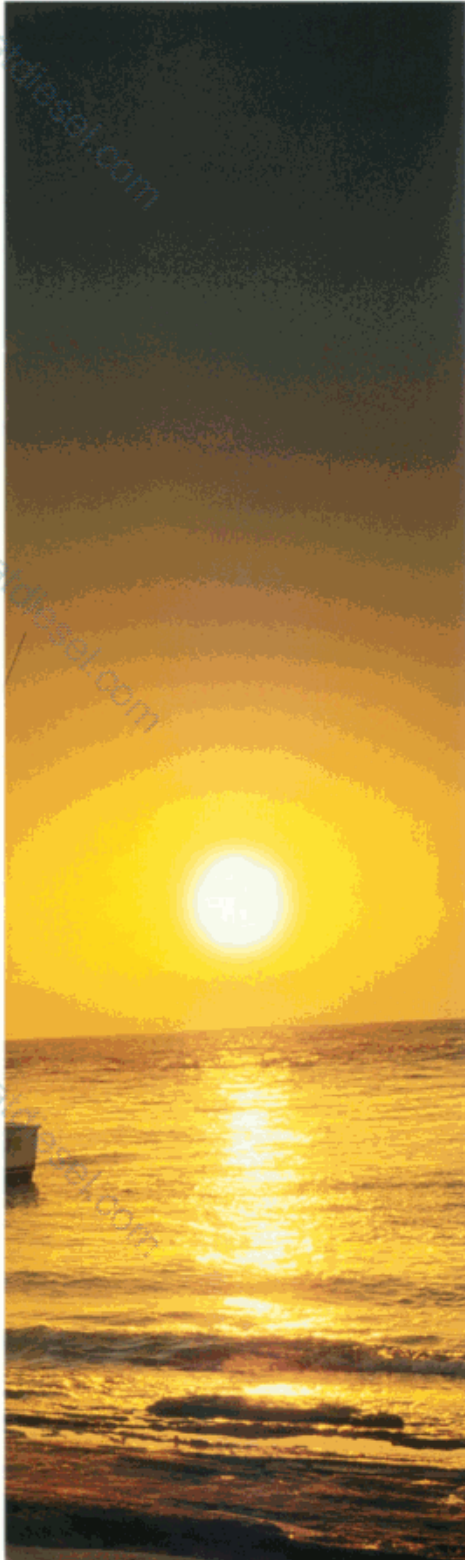


*High-Performance Marine Diesel Engines for Pleasure Craft.*



**CATERPILLAR®**





**Cat® engines. Because we're  
with you all the way.  
Except, of course, when you  
want to be alone.**

When you take time off to

kick up a bit of wake,

you deserve engines

that work as hard as you do.

Engines that start. Engines that respond.

Engines that deliver

exhilarating power.

At Caterpillar,

we've spent decades designing,

building, supplying and

supporting marine diesel

pleasure craft engines.

So when you're

ready for fun,

they're ready to run.



When Rudolph Diesel designed his "rational heat engine," he accurately envisioned diesel power's work capabilities.

He just didn't foresee the possibilities inherent in a twin engine 35-ft. (10.7m) sportfisher taching out at 2800 rpm, heading offshore 100 miles to spend the day trolling your favorite reef or canyon.

Today, Cat diesels aren't just rational: they're fun.



Gas engines are fine for smaller boats that don't travel too far from shore. But if you're serious about offshore fishing or long distance cruising in boats over 30 ft. (9.1m), you want diesel engines. They let you fish all day and travel longer between fuel stops. They let you swing a bigger prop, with more thrust and better performance at all throttle speeds. Maintenance is simpler and less headache-prone. Diesels are more durable, have better resale value, and use safer fuel.

### **Caterpillar. The very definition of the diesel advantage.**

Caterpillar sells more marine diesel engines over 250 bhp



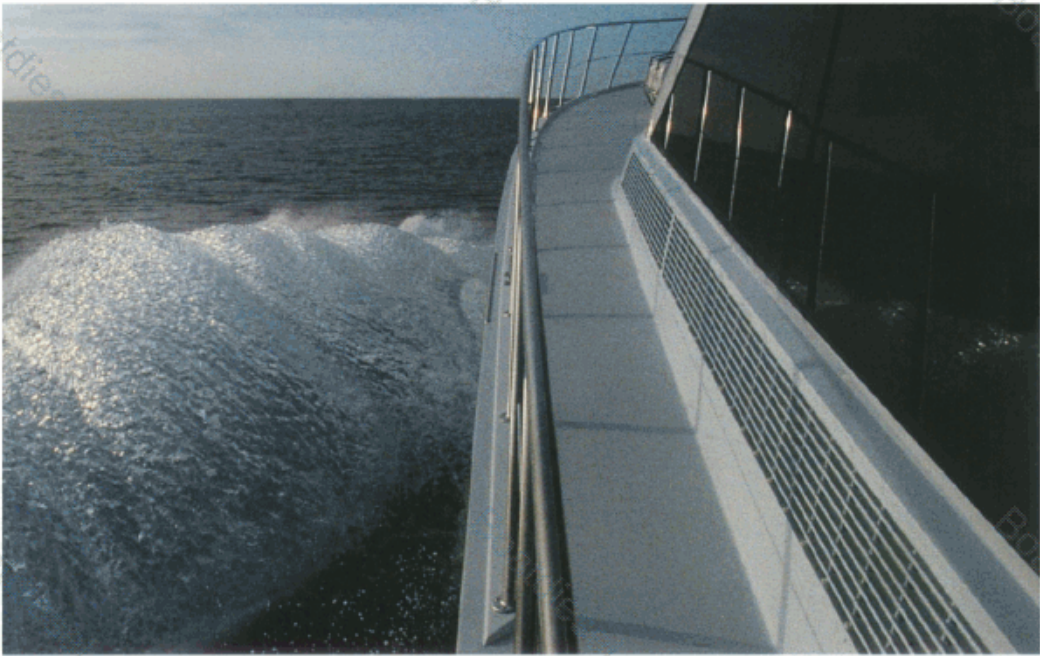
## **To have more**

(185 bkW) than any other manufacturer in the world. We believe the reason for this is our proven track record stretching back over 70 years, and our heavy investment in research and development to improve upon the natural advantages of diesel power.

Diesels are efficient, so we make ours the most efficient, with higher power output at lower fuel consumption levels.

Diesels are reliable and durable, so we develop technology to produce awesome performance and reduce weight, all while improving reliability and durability. Cat engineers design for high performance without compromising long engine life.

In other words, we build upon the advantages of diesel, without sacrifice.



## When on the water, get serious. Get a diesel.

### ***Even when you're the best, there's room for improvement.***

The Cat marine engine line is continually evolving. New engines are developed. Existing models are improved and updated to take advantage of new technologies, new materials, and new information accumulated from real-world operating experience.

When the International Maritime Organization (IMO) announced the possibility of new NOx marine engine emissions regulations for the year 2000, Caterpillar went to work: All Cat engines are now IMO compliant. All popular ratings are still available. And Caterpillar did what was necessary — in most cases changing engine configuration, control software, or components — to meet IMO certification requirements while minimizing potential performance impacts.

Nowhere is Cat marine engine evolution more dramatically obvious than in the development and use of electronic engine control. Since 1992, Cat engines have received a terrific performance boost from electronic control — all while staying true to traditional diesel strengths.

Cat electronic engines use a microprocessor to continuously adjust the fuel rate based on multiple engine operating parameters. This allows higher power output, faster starts, precise engine speed governing, and multiple engine synchronization. Low speed reserve power provides rapid acceleration and easy acceptance of extra load. Boat handling is enhanced with premium performance features such as slow vessel mode and trolling mode. Emissions are reduced and smoke is virtually eliminated. Engine protection and monitoring capabilities are vastly improved.





***When you're a hundred miles offshore, you gain a whole new appreciation for the word quality.***

For all their wonders, electronics are only as good as the iron they control. Precision engineering and superior mechanical integrity are qualities that every Cat engine claims. It's part of the package of basic diesel values that Caterpillar has always promoted and improved upon.

All Cat engine production facilities are certified by the International Standards Organization, with ISO 9001 international quality standard certification. Caterpillar has a long history of establishing quality assurance programs for both internal manufacturing operations and external suppliers long before such programs became popular. With excellent quality assurance systems already in place,

Caterpillar sped through the ISO auditing process.

***The Caterpillar support network:  
Proof that the world is indeed getting smaller.***

If you ever need service for your Cat marine engine, you can rest assured knowing it's available no matter where you are. Because there are 1,200 Cat service locations around the world. In addition, there are 300 AMD (Authorized Marine Dealer) locations to serve you. All with service technicians who are as reliable as the engines they work on. They receive the most extensive professional training in the diesel engine business. They are armed with advanced diagnostic tools, and abetted by fast access to premium quality Cat parts.

And for instantly available parts to carry out maintenance



"Many companies take a year or more to install quality systems meeting the ISO standards.

The seven-month timeframe for Caterpillar speaks to the company's history of quality."

– Ray Davies, Det Norske Veritas

and simple at-sea repairs, stow a Cat Cruise Kit onboard. Kits consist of a rugged polyurethane case containing instructions, gaskets, filters, clamps and other spare parts chosen specifically for your Cat engine, new or old. To order, all you need is your engine serial number.

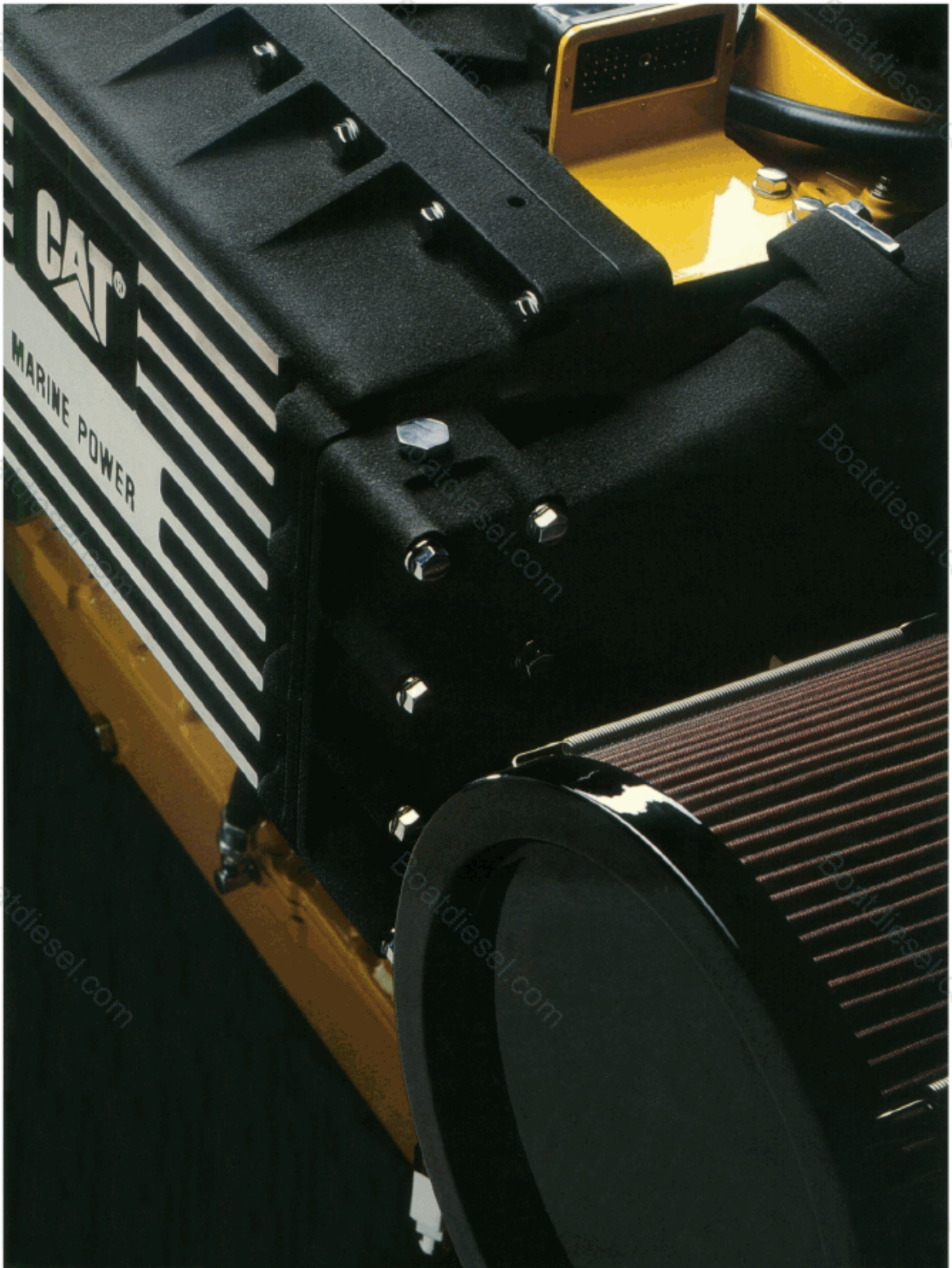


### **Better performance is in the details.**

Caterpillar history is about innovative technology, precision engineering, dedication to quality, a solid reputation for reliability and durability, and a superior dealer service organization. It's about support that breeds loyalty.

Verifiable customer confidence. And, of course, it's about the stories you occasionally hear from other boat owners: "Once upon a time I did have an engine problem, and Caterpillar fixed it."

There are a lot of reasons to power your boat with Cat engines. Because boating is about a lot more than engines.





# Most of the world is covered by water. The water is covered by Caterpillar.



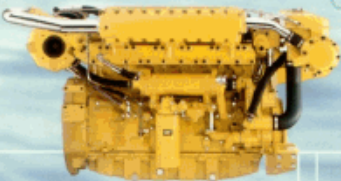
4.3" bore/110 mm bore



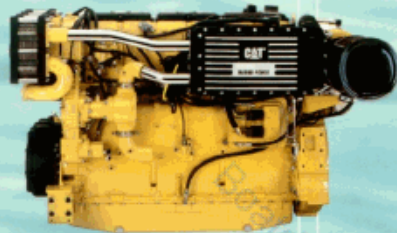
4.5" bore/114 mm bore



4.9" bore/125 mm bore



5.1" bore/130 mm bore



5.4" bore/137 mm bore



6.7" bore/170 mm bore

Cat engines offer the  
power to boost your adrenaline,  
fuel efficiency to extend your  
cruising range, and  
confidence in knowing you  
have the best engines  
available.

Choosing Caterpillar engines means choosing  
from six engine families with power ratings  
from 210 bhp to 3000 bhp (157 to 2237  
kW). Weight-to-power ratios as low as 3.78  
lbs./hp. Seven high performance models  
featuring state-of-the-art electronic control.  
A five-year warranty\* for non-revenue  
producing boats. Ultimately,  
there's a set of Cat marine diesel  
engines designed to help you  
achieve secure excitement.

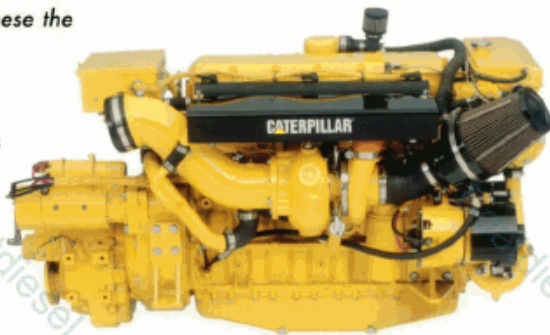
\*See your Caterpillar dealer for details

# 3126

300 - 420 bhp  
(224 - 313 bkW)  
2800 rpm  
439 cu. in. (7.2L)  
mechanical control I-6

*Don't call these the  
smallest Cat marine engines.*

*Call them the best engines  
for 30-45 ft. boats.*



At Caterpillar, there's no such thing as a "little" diesel. Our 3126 engine has slim, in-line 6-cylinder configurations that allow easy twin engine installation...even with the smaller footprints of 30-45 ft. (9.1-13.7m) boats. And thanks to 300 to 420 bhp (224 to 313 bkW) of diesel power, you're doing a little more than frothing up the water to stern.



The 3126 engine also incorporates many of the proven technologies of its larger siblings. Like large camshafts, two-piece steel chrome pistons, large oil coolers, roller followers and heavy-duty unit fuel injectors. And we've made numerous upgrades to the 3126 engine, including a new, more robust turbocharger, an improved water pump, a stronger "ductile" iron exhaust manifold,

and rugged Pyromet intake and exhaust valves. All of which will improve reliability, durability, throttle response, boost and acceleration while virtually eliminating exhaust soot.

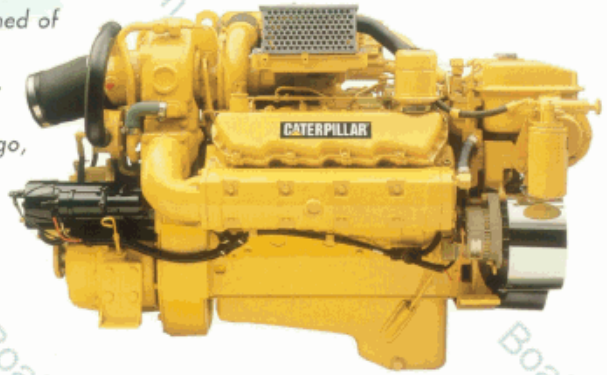
So how does this engine compare to gas engines in terms of efficiency? Well, let's say we're cruising two similar boats with equal fuel capacity: If the gas-powered boat gives out shortly after six hours, your Cat 3126-powered boat will continue cruising for an additional four hours. Now you're going places!

The Cat 3126 marine engine. The same reliable, durable engines police patrols and commercial fishermen depend on every day. They're serious engines, to help you have more fun cruising and fishing.

210 - 450 bhp  
(157 - 336 bkW)  
2800 rpm  
636 cu. in. (10.4L)  
mechanical control V-8

# 3208

*For centuries,  
engineers dreamed of  
creating a perpetual motion machine.  
Thirty years ago,  
we succeeded.*



All Caterpillar marine pleasure craft engines owe their origins to the 3208. It was the first Cat engine to prove that higher horsepower and lower weight, combined with traditional Cat durability and reliability, could make a big splash in the pleasure craft industry. When the 3208 was turbocharged over 20 years ago, there was no stopping it — or Caterpillar — on the water. Single 3208s packed into sportfishers as short as 24 ft. (7.3m) helped a lot of fishermen get started with diesel power.

Today's 3208s are reliable powerhouses, cranking out almost 200 (149 bkW) more horsepower than the original

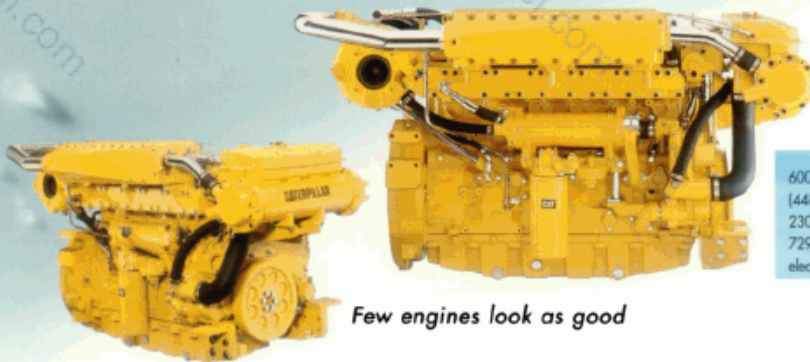
3208T. And nearly every single component — including



the engine block — has been upgraded over the years. New materials and technologies strengthen the crankshaft, bearings, rods, pistons, valves, and other components. Increased oil and cooling system capacities help ensure long, reliable life.

It's a solid, big 636 cu. in. (10.4L) V-8, ready to put a little rapid acceleration excitement into your boating life.

Some day the Cat 3208 will retire from the new engine lineup. But count on seeing 3208-powered boats on the water for decades to come. Loyal owners, continuing parts support, and skilled Cat mechanics will make sure the only wake for these legendary V-8 engines will be a wave.



600 - 660 bhp  
 (448 - 492 kW)  
 2300 rpm  
 729 cu. in. (12L)  
 electronic control I-6

# 3196

*Few engines look as good*

*on paper.*

*Rarer still are engines*

*that look as good*

*on the water.*

600 bhp  
 (448 kW)  
 2300 rpm  
 629 cu. in. (10.3L)  
 electronic control I-6

# 3176C

### **The 3176C: Ahead of its time.**

Introduced in 1994, the 3176B was the first Cat marine engine designed specifically for electronic control. Six years later — when other engines needed component changes to meet year 2000 IMO emissions regulations while maintaining previous power output, reliability and durability levels — the 3176C only needed minor modifications to engine control software.

Of course, requirements other than emissions drove 3176 development. It's built for fast starts, exceptional low-end power, rapid acceleration with virtually no smoke, and enough reserve power to leave mechanically controlled engines lugging far behind in power turns or pushing through adverse sea conditions.

The 3176Cs compact size and low weight-to-power ratio make it ideal for everything from 40 ft. performance craft to 60 ft. cruisers.

### **The 3196: More of a good thing.**

What the 3176 started, the 3196 took one step further, packing 10 percent more power and 16 percent more displacement into the same engine dimensions. Put simply, the top-rated 3196 has the highest power output, lowest weight-to-power ratio, and best fuel consumption to power rating of any diesel in its class. Period.

The 3196 is also built for long engine life, with lower cylinder pressures and exhaust temperatures than other engines in this class. And premium engine protection features are built right into the electronic control system. Think of it as a marvel of modern Cat engine technology, with high-pressure electronically controlled fuel injection, high efficiency turbocharging, and high strength/low weight component designs. Or just feel it, commanding the controls of a 50-footer powering out to sea with twin Cat 3196 engines.

580 - 1400 bhp  
 (433 - 1044 bkW)  
 2100 to 2300 rpm  
 893 cu. in. [14.6l] - 1649 cu. in. [27l]  
 electronic control I-6, V-12  
 mechanical control I-6, V-12

# 3400

*A lot of engines out there*

*have what it takes*

**to make your heart pound.**

*This one,*

*however, can make it*

**stop.**



Your boat is big enough to live on, fast enough to leave the little fish rocking in your wake, and reliable enough to go wherever big water beckons.

Chances are, your boat is powered by Cat 3400 engines.

At the top of the line is the new Cat 3412E, a 1400 bhp (1044 bkW) 12-cylinder piece of engineered art with mid-range power curves that put the competition to shame. This level of power development gives you awe-inspiring acceleration, increased power and torque for maneuvers and challenging seas, and improved cruising characteristics in smoother water.

The source of this electrifying performance? Caterpillar

electronic control, with a patented Hydraulically-Actuated, Electronically-Controlled Unit Injector (HEUI) fuel system that allows full pressure fuel injection at 40 percent rated engine speed. This improves fuel atomization for a more complete burn, accomplishing the twin tasks of improving performance while reducing emissions levels.

The 6-cylinder 3406E isn't far behind its bigger brother, cranking out 133 bhp (100 bkW) per cylinder with the help of electronic fuel injection and a high-position camshaft. Full power and torque are available at 1600 rpm, so you can head out with full confidence in conditions that would cause many engines to bog down.

For nearly 25 years, Cat 3400s have proven their reliability and durability. Now, with a big boost of high performance, they're also faster...and more fun.



775 - 3000 bhp  
(578 - 2237 kW)  
1200 to 1925 rpm  
2105 cu. in. (34.5L)  
3158 - 3568 cu. in. (51.8-58L) - 4210 - 4758 cu. in. (69-78L)  
electronic control V-8, V-12, V-16

# 3500B

*It has been said that  
less is more.  
But we know better,  
don't we.*



If you're interested in a 100-200 ft. (30.4-60.9m) yacht, you'll want the best of everything on your boat, including your engines. With the best engines, your yacht will be ready to go when you are, it will cruise farther between fuel stops, and your time at sea will be packed with pleasure rather than headache.

Cat 3500 engines outsell all other engines in their class for good reasons: power, performance, reliability, fuel efficiency, and low emissions. Modern electronically controlled Cat 3500 Series B

engines set the industry standards in all these areas while also providing superior engine control, monitoring, and protection features that make life a lot easier for you and your captain.

Cat 3500s power the yachts that take you wherever you want to go. World-class engine efficiency gives these vessels cruising ranges up to 10,000 nautical miles at 17 knots, so you only stop where you want, when you want.

Cat 3500 Series B engines offer high strength as well as high power and efficiency. Extensive engine developments, using cutting-edge technology and materials, maximize component strength to give you the reliability you need to cruise the world. And durability to protect your vessel investment.

With Cat 3500 engines, you'll always be ready for your next luxury cruise, whether it's a short Mediterranean island hop, or a trans-Atlantic crossing.

## In a world that's two-thirds liquid, you need a rock-solid engine.



*There's a lot of history inherent in every Cat engine. It's a history of over 75 years of diesel engine progress. Caterpillar engine development is about tighter tolerances, advanced materials, and sophisticated component designs that maximize combustion efficiency...and excitement.*

*It's about early efforts at turbocharging, and recent application of state-of-the-art electronic unit injection.*

*There's a lot of value in Cat engines. And no matter how many technical advances are incorporated, Caterpillar has always stayed true to the basic advantages of diesel power: higher power, lower fuel consumption, reliability, durability, and ease of service.*

*Cat engine history is also about Cat dealer history. From over 1,200 locations worldwide, Cat dealers provide you with the support, service and parts you need to enjoy your boat. We stand behind our engines with a comprehensive two-year warranty plus three additional years coverage of major engine components.\**

*Caterpillar history has brought boaters a new level of performance, reliability, and field service support. Following this historic path, Caterpillar offers you the best engines available today, and vows to bring you even better power, performance and service in the future.*

*Make Caterpillar engines part of your history. Specify Cat engines for your next boat.*

\*See your Caterpillar dealer for details.

## Caterpillar.

Your local resource worldwide.

### Asia

Caterpillar Asia Pte. Ltd.  
Power Systems Division  
7 Tractor Rd.  
Jurong, Singapore 627968  
Phone: 65-6628-400  
Fax: 65-6628-414

### Australia

Caterpillar of Australia Ltd.  
Private Mail Bag 4  
Tullamarine  
Victoria, Australia 3043  
Phone: 61-3-9953-9301  
Fax: 61-3-9338-9021

### China

Caterpillar China Ltd.  
37/E, The Lee Gardens  
33 Hysan Avenue  
Causeway Bay, Hong Kong  
Phone: 852-2-848-0320  
Fax: 852-2-848-0223

### Commonwealth Of Independent States

Caterpillar Overseas S.A.  
Bldg. 13  
Krasnoproletarskaya St. 2/4  
103006 Moscow, Russia  
Phone: 7-095-755-8161  
Fax: 7-095-785-5688

### Europe, Africa, Middle East

Caterpillar S.A.R.L.  
P.O. Box 6000  
1211 Geneva 6,  
Switzerland  
Phone: 41-22-849-4444  
Fax: 41-22-849-4984

### Japan

Caterpillar Power Systems  
Inc.  
Sanno Grand Building 8F  
2-14-2 Nagatacho  
Chiyoda-ku, Tokyo 100,  
Japan  
Phone: 81-3-3593-3232  
Fax: 81-3-3593-3238

### Mexico, The Caribbean, South America

Caterpillar Americas Co.  
701 Waterford Way, Suite 200  
Miami, FL 33126  
U.S.A.  
Phone: 305-476-6876  
Fax: 305-476-6850

### North America

Caterpillar Inc.  
Engine Division-AC6110  
P.O. Box 610  
Mossville, IL 61552-0610  
Phone: 800-321-7332  
Fax: 309-578-2559

### Worldwide Financing

Caterpillar Financing  
Services Corporation  
Marine Division  
3310 West End Ave.  
Nashville, TN 37203  
Phone: 615-386-4037  
Fax: 615-386-4054

### Web site:

[www.CAT-marine.com](http://www.CAT-marine.com)

### E-mail:

[CAT\\_Power@Cat.com](mailto:CAT_Power@Cat.com)

**CATERPILLAR®**